

# HELI

## CQDM20J

### Electric reach truck

#### Characteristics

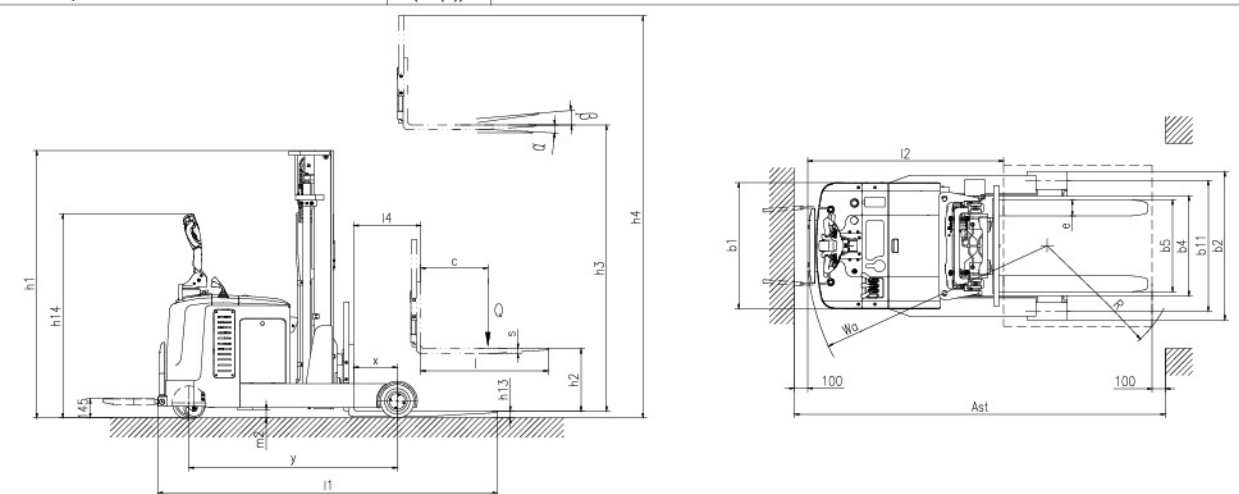
- Vertical AC drive system has strong power and meet the continuous high-intensity use;
- The floating bracket is set in the drive system and equipped with supercharging oil cylinder, which can effectively prevent slipping in case of heavy load, reduce ground shocking and avoid tilting when high-speed turning.
- Equipped with electronic power steering system, the steering is light and comfortable.
- The configuration of lifting electronic limit function ensured the truck stable operation, energy saving and high efficiency.
- Equipped with emergency stop switch, emergency reverse switch and electromagnetic braking system to ensure safety.
- It is equipped with a speed deceleration device when the goods are highly lifted and reduce the driving speed according to the mast height to ensure the operation safety.
- Full free lifting configuration is optional which is suitable the operation of trucks in containers or other environments with limited ceiling height.



## CQDM20J

#### Manufacturer's Data and Technical Characteristics

Characteristics		HELI CQDM20J	
1.1	Manufacturer	HELI	
1.2	Model	CQDM20J	
1.3	Power unit	Electric	Electric
1.4	Operation	Pedestrian	Pedestrian
1.5	Rated traction weight	Q (t)	2.0
1.6	Load centre	c (mm)	500
1.7	Axle centre to fork face	x (mm)	372
1.8	Wheel base	y (mm)	1500
1.9	Mast type	Standard 2-Stage mast	Full free 2-Stage mast
<b>Weights</b>			
2.1	Service weight with battery	kg	2750
<b>Wheels/Tyres</b>			
3.1	Wheels type	Polyurethane	
3.2	Driving wheel size	Φ250×127 (PU)	
3.3	Bearing wheel size	Φ250×120	
3.4	additional wheels (dimensions)	Φ149×60	
3.5	Wheels, number front/rear (x = driven)	1, 4/2	
3.6	Track width	b <sub>10</sub> (mm)	665
3.7	Track width	b <sub>11</sub> (mm)	976
<b>Dimensions</b>			
4.1	Mast/fork carriage tilt, forward/backward	a/b (°)	3/5
4.2	Height of mast, lowered	h <sub>1</sub> (mm)	1993
4.3	Free lift	h <sub>2</sub> (mm)	0
4.4	Lift	h <sub>3</sub> (mm)	3000
4.5	Height of mast, extended	h <sub>4</sub> (mm)	3860
4.6	Overall height(With handle)	h <sub>14</sub> (mm)	1075/1502
4.7	Fork Height, Lowered	h <sub>13</sub> (mm)	40
4.8	Overall length	l <sub>1</sub> (mm)	2530
4.9	Length to fork face	l <sub>2</sub> (mm)	1460
4.10	Overall width	b <sub>1</sub> / b <sub>2</sub> (mm)	1106/940
4.11	Fork dimensions	s/e/l (mm)	40/120/1070
4.12	Width of forks	b <sub>5</sub> (mm)	240-715
4.13	Distance Between Support arms/loading surfaces	b <sub>4</sub> (mm)	746
4.14	Reach distance	l <sub>4</sub> (mm)	500
4.15	Min.Ground clearance	m <sub>2</sub> (mm)	63
4.16	Aisle width with pallet 1000 x 1200 across forks	A <sub>st</sub> (mm)	2900
4.17	Aisle width with pallet 800 x 1200 along forks	A <sub>st</sub> (mm)	2960
4.18	Min.Turning radius	W <sub>a</sub> (mm)	1800
<b>Performance</b>			
5.1	Travel speed, laden/unladen	(km/h)	5.2/5.5
5.2	Lifting speed, with/without load	(mm/s)	90/120
5.3	Lowering speed, with/without load	(mm/s)	120/130
5.5	Maximum climbing ability, with/without load	(%)	3/6
5.6	Service brake	Electromagnetic	
<b>Drive</b>			
6.1	Drive motor, 60 minute rating	(kW)	2.5
6.2	Lift motor rating at S3 15%	(kW)	3
6.3	Battery according to DIN 43531/35/36 A,B,C,no		no
6.4	Battery voltage/rated capacity	(V/Ah)	24/280
6.5	Battery weight (± 5%)	(kg)	275
<b>Others</b>			
7.1	Type of drive control		AC
7.2	Noise level at operator 's ear	(dB(A))	≤75



Interlaken Maquinaria S.A. de C.V.  
 Tel. Corporativo: 55 9035 6953  
 E-mail: info@interlakenmaq.com  
 www.helimexico.com